

Cam Locks

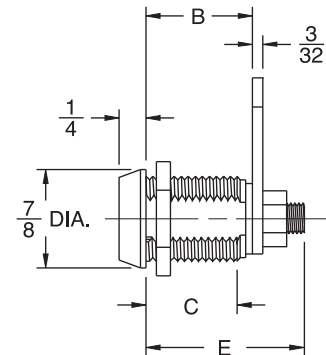
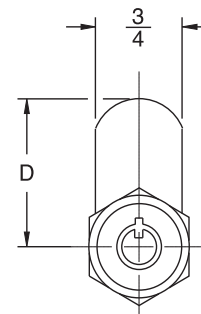
C-510-XS | C-510-S | C-510-M | C-510-L

Die Cast Tubular Cam Lock

PIN TUMBLER Cannot be Masterkeyed



BDB510S



Part#	UPC Code	Length	Keyed	Finish	MFT PT #	Stock Quantity	Boxed Weight lbs/oz	MSRP
Stock Items 48 Hour Shipping:								
BDB510XS	021919510008	7/16"	KD	US26	51000	25	6/5	\$14.70
BDB510XS	021919510015	7/16"	KA-A0001	US26	51001	25	6/5	\$14.70
BDB510XS	021919510022	7/16"	KA-A0002	US26	51002	25	6/5	\$14.70
BDB510XS	021919510039	7/16"	KA-A0003	US26	51003	25	6/5	\$14.70
BDB510XS	021919510046	7/16"	KA-A0004	US26	51004	25	6/5	\$14.70
BDB510S	021919510107	23/32"	KD	US26	51010	25	6/5	\$14.70
BDB510S	021919510114	23/32"	KA-A0001	US26	51011	25	6/5	\$14.70
BDB510S	021919510121	23/32"	KA-A0002	US26	51012	25	6/5	\$14.70
BDB510S	021919510138	23/32"	KA-A0003	US26	51013	25	6/5	\$14.70
BDB510S	021919510145	23/32"	KA-A0004	US26	51014	25	6/5	\$14.70
BDB510M	021919510206	29/32"	KD	US26	51020	25	6/5	\$14.70
BDB510M	021919510213	29/32"	KA-A0001	US26	51021	25	6/5	\$14.70
BDB510M	021919510220	29/32"	KA-A0002	US26	51022	25	6/5	\$14.70
BDB510M	021919510237	29/32"	KA-A0003	US26	51023	25	6/5	\$14.70
BDB510M	021919510244	29/32"	KA-A0004	US26	51024	25	6/5	\$14.70
BDB510L	021919510305	1-1/8"	KD	US26	51030	25	6/5	\$14.70
BDB510L	021919510312	1-1/8"	KA-A0001	US26	51031	25	6/5	\$14.70
BDB510L	021919510329	1-1/8"	KA-A0002	US26	51032	25	6/5	\$14.70
BDB510L	021919510336	1-1/8"	KA-A0003	US26	51033	25	6/5	\$14.70
BDB510L	021919510343	1-1/8"	KA-A0004	US26	51034	25	6/5	\$14.70

- **Material:** Zinc die cast housing, brass plug & spindle
- **Operation:** Push key and turn to desired position for locking and unlocking. Key removeable at various locations depending on mounting configurations.
- **Specifications:** Tubular cam lock available with removeable style cam only. Engineered for use in metal or fiberglass products.
- **Mechanism:** 7 Pin tumbler mechanism utilizing a tubular key which offers over 750,000 combinations.
- Various cams, rotations, key pulls and finishes.
- Available keyed-alike or keyed-different in multiple lengths.
- Master Keying available with 3,000 piece minimum

Package Includes:

- (1) (7 Pin) cylinder (w / key pulls at 12, 3, and 9 positions)
- (2) keys (KA or KD)
- (1) Straight cam 1-1/8"
- (1) Straight cam 7/8"
- (1) Offset cam 1-1/8" (1/8" offset)
- (1) Offset cam 1-1/8" (1/4" offset)
- (1) 90 Degree stop cam
- (1) 180 Degree stop cam
- (1) cam securing hex nut
- (1) cam securing lock

Lock #	B	C	E
C510XS	7/16"	5/16"	3/4"
C510S	23/32"	9/16"	1"
C510M	29/32"	3/4"	1-15/32"
C510L	1-1/8"	27/32"	1-17/32"